

## PLEASE READ THE ENTIRE INSTRUCTION SHEET BEFORE STARTING INSTALLATION.

PLEASE REFER TO THE OPERATORS MANUAL FOR YOUR SPECIFIC COMBINE FOR PERTINENT SAFETY PRECAUTIONS.

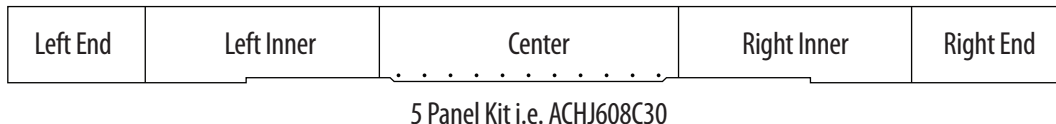
WHEN USING POWER TOOLS, BASIC SAFETY PRECAUTIONS SHOULD ALWAYS BE FOLLOWED TO REDUCE THE RISK OF PERSONAL INJURY. WEAR SAFETY GLASSES OR GOGGLES.

THE TERMS "LEFT", "RIGHT", "FRONT", & "REAR" ARE DETERMINED BY FACING IN THE DIRECTION THE COMBINE WILL TRAVEL WHEN IN USE.

ONCE COMPLETE, BE SURE TO READJUST THE AUGER HEIGHT FOR DESIRED CLEARANCE, SEE YOUR OWNER'S MANUAL FOR PROPER ADJUSTMENT.

### IMPORTANT:

Before you begin installation, compare the contents of box with the enclosed "Packing Slip" to confirm that you have received the correct panels and associated hardware for your model header. Note: The trough liner may be installed over heavily worn metal and over holes in the metal floor if the holes do not exceed 4 inches in width (front to back) and are less than 24 inches in length (left to right).



**Visit us online at [www.lundellplastics.com](http://www.lundellplastics.com) to see other innovative products!**



1. Clean the entire length of the auger trough to remove all dirt and crop residue.



2. Remove all bolts, patches/repairs that would restrict the trough liners from laying flat against the top surface of the metal trough.

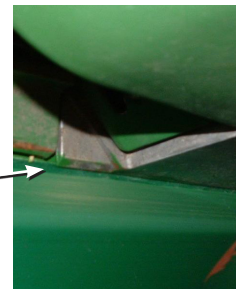


3. Insert the center panel under the auger and use shims to wedge panel down tight against floor as shown in the photo to the left. Be sure the panel is centered to the throat opening.



4. Using wood block and a mallet or hammer, tap the liner forward as far as possible.

*Note: The angle on the front of the liner will wedge under the steel at the center of the row and under the aluminum at the center of the hoods.*



**Visit us online at [www.lundellplastics.com](http://www.lundellplastics.com) to see other innovative products!**



5. Using trough liner as template, drill  $17/64$ " holes along the rear edge of throat opening and install  $1/4$ " X  $3/8$ " Hammer Rivets. Remove wood shims and save for future use.



6. From underneath the head drill  $3/8$ " holes thru the liner where you removed carriage bolts from earlier as shown in photos to the left. Install  $1/4$ -20 x  $1 1/4$ " Fanged Elevator Bolts as shown in bottom photo.



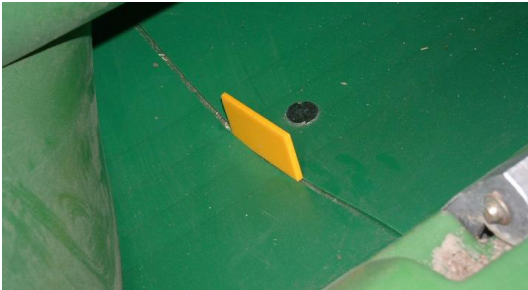
**IMPORTANT:** *Tighten the nut to seat the head of the bolt then loosen the nut  $3/4$  turn. This will allow the liner to expand and contract with temperature change.*



**Visit us online at [www.lundellplastics.com](http://www.lundellplastics.com) to see other innovative products!**



7. Install Left and Right Panels working from center out to the end. Use the 3/16" yellow shim to space the gap between panels as shown in the middle photo. Use the wood shims under auger to hold liner tight against the floor. Be sure front of panel is wedged under steel and aluminum, and the back of panel is down on the floor.



As in Step 6, drill holes from underneath head where you removed carriage bolts earlier. Install 1/4-20 x 1 1/4 long Fanged Elevator Bolts. After you finish each panel transfer wood shims to the next panel and repeat until all panel are installed.



**IMPORTANT:** Tighten the nut to seat the head of the bolt then loosen the nut 3/4 turn. This will allow the liner to expand and contract with temperature change.



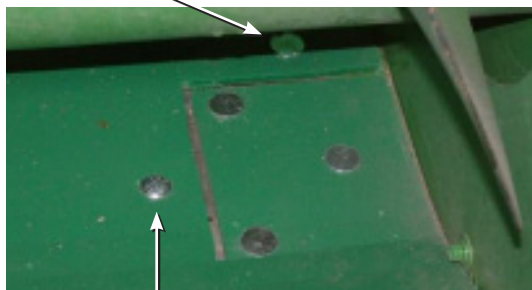
3/8 Carriage Bolt

*NOTE: If your model has the brackets that hold the rear flaps bolted to the underside of the floor (StalkMaster™) use 3/8-16 x 1 1/4 long carriage bolt in those holes. All others use 1/4-20 x 1 1/4 long fanged elevator bolts.*

**Visit us online at [www.lundellplastics.com](http://www.lundellplastics.com) to see other innovative products!**



Add Elevator Bolt



3/8 Carriage Bolt

*To add the cleanout door option, open the door from underneath the head and scribe the outline of the opening on the backside of the end panel. Remove end panel from head; carefully saw along scribed line and save the part cut out to mount to the door if desired. Add additional Elevator bolt behind the cut out.*



Add Bolt Here

Existing Bolts Were Here

8. Add extra bolts approximately 3" on either side of seams (where panels overlap). There may be some of the original bolt locations on one side already. See photo to the left. At this seam simply add a bolt hole thru the liner and steel floor approximately 3" to the left of the seam. Install 1/4-20 x 1 1/4 long fanged elevator bolt.



9. To complete the installation drill 17/64 holes along front edge 4 inches to either side of the centerline of each row and 1/2" from front edge. Install 1/4 x 3/8 long hammer rivets in each hole as shown in photo to the left.

**USE CAUTION:** *Do not drill into gearbox under the floor.*